

Welcome to the second Lancashire and West Yorkshire Regional Delivery Partner (RDP) update from the Great Heights Academy Trust team as part of our contracted work to match and monitor system leaders for the current Trust and School Improvement Offer (TSIO) for 2021/22.

Previous newsletters and other TSIO information/guidance can be found on [our webpages](#).

This TSI offer is a core aspect of a sector-led School Improvement strategy and the Department of Education's work with schools and trusts through the RSC regional teams. As the contracted body supporting the matching of NLEs in LWY we will be your first point of contact during matching and when matched - a.bennett@greatheightstrust.org.uk

Kindest regards

Amanda Bennett OBE

In this TSIO newsletter:

1. New EEF Report – 'Effective Professional Development'
2. Behaviour Hubs welcome Lead school & MAT application recommendations
3. LWY Teaching School Hub focus - [Rainbow TSH](#), [Leeds TSH](#), [Bradford TSH](#) and [Bright Futures TSH](#)
4. LWY TSIO Regional Delivery Team information

Useful links: [New NPQ – Leading Literacy Framework](#), October 2021

New EEF Report – 'Effective Professional Development'

EFFECTIVE PROFESSIONAL DEVELOPMENT Guidance Report

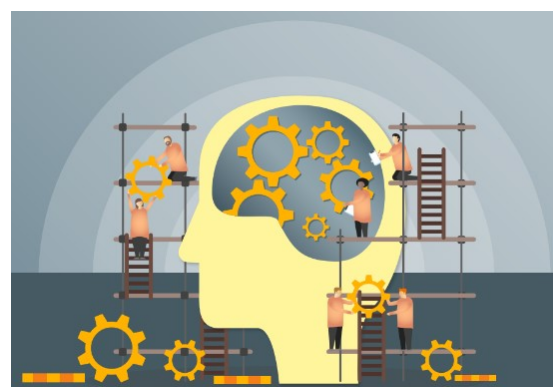
System leaders deployed in the current TSIO may find the EEF's latest report useful when guiding and shaping their supported schools' roadmap to improvement.

"The new report, '[Effective Professional Development](#)', aims to help schools make sure that professional development is of the highest possible quality, and in turn, that it has the biggest possible impact on teaching practice and pupil outcomes.

It focuses on three overarching principles for effective professional development. These are:

- When designing and selecting professional development programmes, school leaders should focus on the mechanisms for development, such as feedback or goal setting.
- Ensure that professional development effectively builds knowledge, motivates staff, develops teaching techniques, and embeds practice.
- Implement professional development programmes with care, taking into consideration the context and needs of the school."

[The full report](#) and further associated resources can be downloaded [here](#).



Behaviour Hubs welcome Lead school & MAT application recommendations

Following a successful initial cohort, the Behaviour Hubs programme is now looking to welcome a new intake of Lead schools and MATs to join them.

Funded by the DfE, Behaviour Hubs is a 3-year programme which pairs schools and MATs that have exemplary behaviour practices with partner schools or MATs who want and need to improve pupil behaviour.

The programme is looking for 'good' and 'outstanding' schools that demonstrate excellent behaviour culture with an emphasis on schools that work in challenging contexts. Your support in recommending schools within your network is particularly appreciated.



If you would like to recommend a school to become a Lead school in the Behaviour Hubs programme, please contact the team by emailing behaviourhubs@educationdevelopmenttrust.com. MATs with exemplary behaviour practice across their schools are also invited to apply alongside a prospective Lead school within their trust.

You can find more information about the role and responsibilities of Lead schools and MATs in [the Behaviour Hubs brochure](#). The application form in addition to the full application guidance can be accessed [here](#). Applications close on the 31st October.

Your local Teaching School Hubs

Teaching school hubs are providing high-quality professional development to teachers at all stages of their careers and system leaders may well wish to reference this in their roadmaps for supported schools. In this newsletter we spotlight four of our local TSHubs: Rainbow, Leeds, Bradford and Bright Futures:



[Rainbow Teaching School Hub](#) covers Sefton, Knowsley and St. Helens in the North-West. Through our Lead School and the Rainbow Education MAT we also have two NLEs in Liverpool.

The Hub Director is Jennifer Murphy, jmurphy@remat.org.uk, 07706 703935

Experienced in school-to-school support, system leader deployment and signposting of DfE programmes, we can offer access to a wide range of SLEs, LLEs and NLEs throughout our region in primary, secondary, post 16 and special schools.

To get in touch with us, please use the hub email on rainbowhub@remat.org.uk and we will get back to you.



At [Leeds Teaching School Hub](#) we are devoted to ensuring that disadvantaged children remain our central point of focus in all that we do. Our central mission is to ensure that we play a significant role in removing the stubborn link between poverty and academic performance.

Another major focus of our work is around developing a transformational, city wide approach to pre-school educational entitlement and Early Years and Foundation Stage education. We work closely with our strategic partners, representing the very best education providers in Leeds, to ensure that every aspect of our work (ITT, ECF, NPQs, AB, CPD) reflects the needs of the Leeds city region.

We are delivering the full suite of new and reformed NPQs from November 2021 across Leeds. To find out more please visit our website <https://leedsteachingschoolhub.co.uk/> or contact us via info@ltsh.org.uk. To keep up-to-date with other CPD delivered by Leeds Teaching School Hub please follow us on Twitter [@LeedsTSH](https://twitter.com/LeedsTSH)



We are a delivery partner to Ambition Institute for the Early Career Teachers programme and National Professional Qualifications. We also lead teacher development programmes on behalf of Bradford Opportunity Area. Our Appropriate Body service quality assures ECT induction. We extensively signpost [a wide range of CPD events in partnership with curriculum hubs and national providers](#).

Led by Copthorne Primary School and part of Exceed Academies Trust, we serve Bradford and established partner schools and trusts beyond the city.

Website: www.teachingschoolhub.co.uk

NPQs: Scholarship eligibility guide: www.teachingschoolhub.co.uk/npqeligibility.

Programme details: www.teachingschoolhub.co.uk/npq

ECT programme: www.teachingschoolhub.co.uk/ect

Appropriate Body: www.teachingschoolhub.co.uk/ab

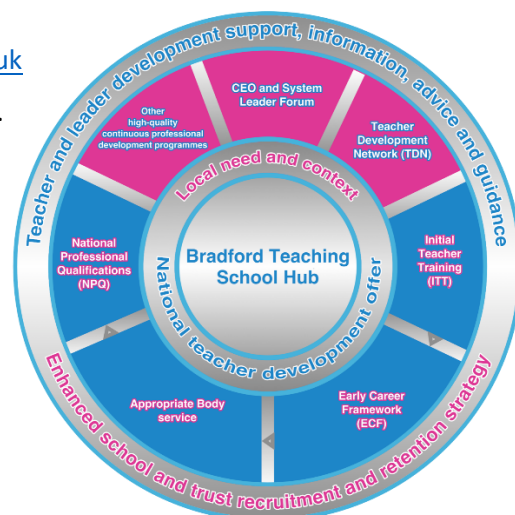
Exceed SCITT: <https://www.exceedscitt.co.uk>

Newsletter: Subscribe at www.teachingschoolhub.co.uk/subscribe

Past editions: www.teachingschoolhub.co.uk/newsletters

Contact: tshub@exceedacademiestrust.co.uk

Twitter, Instagram, LinkedIn and Facebook: [@TeachingSchHub](https://twitter.com/TeachingSchHub)



Through our mission, our family of schools place young people, families and communities at the heart of everything we do. We are a true community with shared responsibility and common core values which create a culture of collaboration, opportunity, respect and innovation.

We inspire excellence and believe in nurturing the abilities of all within our schools and communities. We empower our young people to build purposeful lives and have the courage and confidence to make a positive contribution to society. Through excellence in education all our young people will have a bright future.

Our core values are:

- Integrity – we do the right things for the right reasons
- Passion – we take responsibility, work hard and have high aspirations
- Community – we work together for a common purpose acknowledging our diversity as strength



Integrity
We value and promote integrity in all our actions, partnerships and relationships. It ensures we remain honest, fair and do the right things for the right reasons.



Passion
We value the enthusiasm, drive and energy we have in the pursuit of excellent outcomes for all our partner schools.



Community
We work hard to strengthen, respect, connect with and provide care for the diverse community of schools we serve.

Our offer includes:

- Initial Teacher Training support
- Early Career Framework
- Appropriate Body
- National Professional Qualifications
- Maths Hub
- RSHE Hub
- EAL support
- Access to 200+ SLE's

Website: www.tsh.bright-futures.co.uk

Email: tsh@bright-futures.co.uk

Twitter: [@TSHubsBF](https://twitter.com/TSHubsBF)

All LWY TSHubs can be found via <https://www.gov.uk/guidance/teaching-school-hubs>.

LWY TSIO Regional Delivery Team

Our delivery team includes links to your previous sub-regional TSC contacts and our direct team as below:

LWY Lead Representative – matching and monitoring	<i>Amanda Bennett</i> supported by Dani Worthington as Director of School Improvement	a.bennett@greathightstrust.org.uk
Communications	<i>Nicola Foulkes and Jayne Firth</i>	mat@greathightstrust.org.uk
Regional Delivery Co-ordinators – will contact you when a proposed match is approved	<i>Tessa Mason – LCR&W & BBL</i> <i>Baljit Birring – WY & GM</i>	t.mason@greathightstrust.org.uk b.birring@greathightstrust.org.uk
Data management	<i>Jonathan Pascall</i>	mat@greathightstrust.org.uk

